



## *Vivotek* *IP Surveillance System*

# Network Camera with Pan/Tilt **PT3112/22**

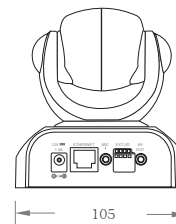
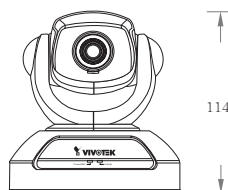
Vivotek MPEG-4 Network Camera with Pan/Tilt, PT 3112/22 is a powerful surveillance system connecting to a Ethernet to provide remote high-quality video and audio. The pan/tilt function that can be controlled through the Internet or the included IR remote control extends the camera practicability and application. Users of Vivotek PT3112/22 can easily access it via an Internet Explorer browser, receiving synchronized video&audio from anywhere anytime.

## Features

- MPEG-4 Compression Engine
- Motorized Pant/Tilt (IR Remote Control included)
- Optimal Synchronization of Audio & Video
- UPnP & DDNS Support
- Intelligent Motion Detection
- Pre/Post Alarm Snapshots
- Extended I/O for Sensor & Alarm
- Free-Bundled Recording Software

# Technical Specifications

## PT3112/22



### Model

- PT3112 NTSC CCD
- PT3122 PAL CCD

### System

- CPU: Trimedia PNX1300
- RAM: 16MB SDRAM
- ROM: 2MB FLASH ROM

### Networking

- Protocol  
UPnp, TCP/IP, HTTP, SMTP, FTP, Telnet, NTP, DNS, DDNS and DHCP
- Ethernet  
10 baseT or 100 baseT Fast Ethernet auto negotiation

### Video

- Algorithm supported  
MPEG4(short header mode)  
JPEG for still image
- Features  
Adjustable image size and quality  
Time stamp and text overlay  
Three configurable motion detection windows  
Flip & mirror  
Video output connector
- Resolution  
**NTSC**  
Up to 30 frames at 176x120  
Up to 30 frames at 352x240  
Up to 10 frames at 704x480  
**PAL**  
Up to 25 frames at 176x144  
Up to 25 frames at 352x288  
Up to 10 frames at 704x576

### Camera Specifications

- 1/4 inch color CCD image sensor  
512(H)x492(V)(PT3112)/512(H)x582(V)(PT3122)  
1 Lux / F2.0  
AGC, AWB, AES  
Electronic shutter:1/60(1/50)~1/100,000sec.

### Lens

- Standard CS-mount type, 4.3mm, F2.0

### Audio

- 24kbps
- Supporting audio mute

### Microphone

- Omni-directional
- Frequency  
20 ~ 20000Hz
- S/N ratio  
More than 58dB

### General I/O

- 1 sensor input max. 12VDC 50mA
- 1 relay output max. 24VDC 1A / 125VAC 0.5A

### Pan/Tilt

- Pan: range  $\pm 135^\circ$ ,  $10^\circ \sim 50^\circ/\text{sec}$
- Tilt: range  $+90^\circ \sim -45^\circ$ ,  $7^\circ \sim 25^\circ/\text{sec}$
- Auto pan mode
- Auto patrol mode

### LED Indicators

- System power and status indicators
- System activity and Network link indicators

### Dimension

- Length: 105mm
- Width: 105mm
- Height: 114mm

### Weight

- NET. 395g

### Power

- Consumption:  
PT3113/3123: near 7.9W
- Input: 100-240VAC, 50/60Hz, 0.4A
- Output: 12VDC, 1.5A

### Operating Environment

- Temperature:  $0 \sim 50^\circ\text{C}$  ( $32 \sim 122^\circ\text{F}$ )
- Humidity: 95% RH

### EMI & Safety

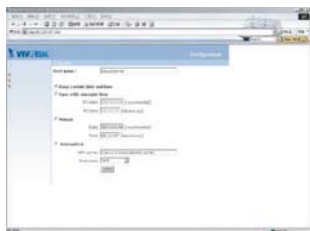
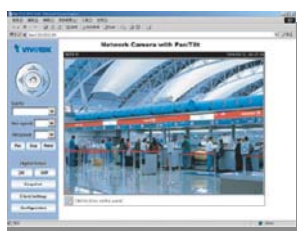
- CE, FCC

### Viewing System Requirement

- Operation system: Microsoft Windows98 SE, ME, 2000, XP
- Browser: Internet Explorer 5.0 or above

### Free Bundled ST3402 Software

- Remote configuration and control sixteen devices
- Event-triggered, scheduled, manual recording
- Instant search with preview windows
- Fast/slow forward replay and pause
- Hard disk quota warning
- Scheduled record
- AVI format export



All specifications are subject to change without notice.  
All other trademarks are owned by their respective companies.



**VIVOTEK INC.**

6F., No. 192, Lien-Cheng Rd.,  
Chung-Ho, Taipei County, Taiwan  
Tel: +886 2 82455282  
E-mail: sales@vivotek.com  
Web: www.vivotek.com

